



SUNY Oswego School of Communication, Media and the Arts

FACILITY UPDATES



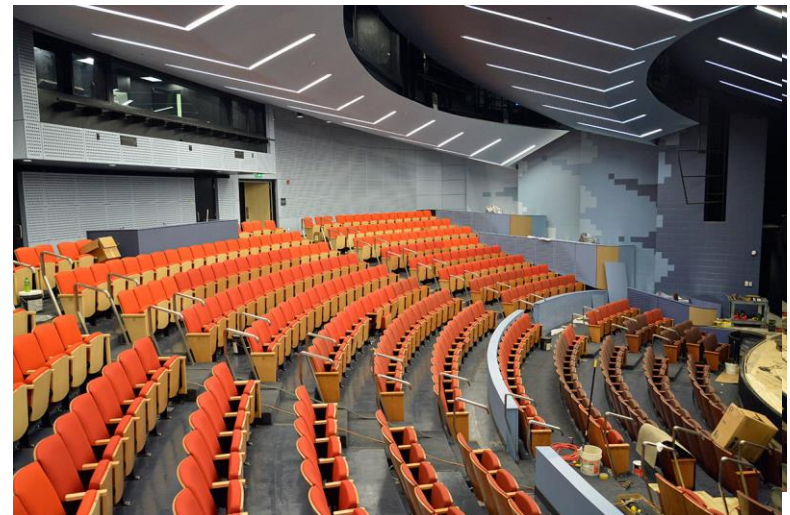
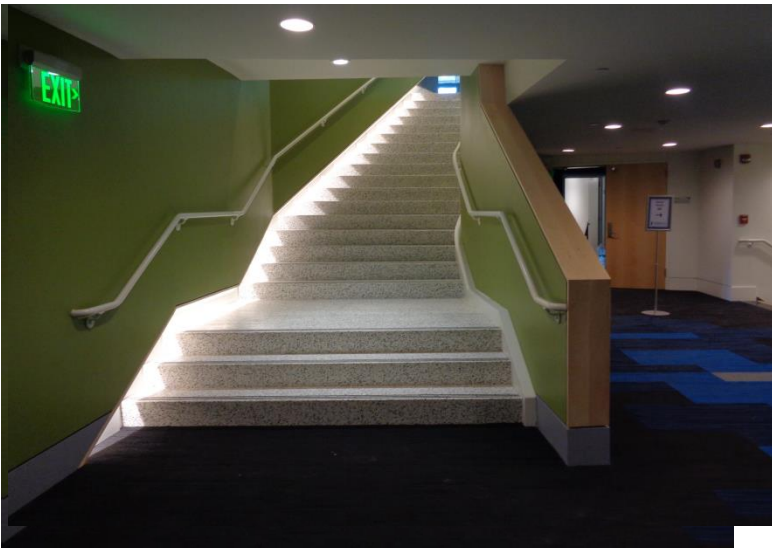
AGENDA

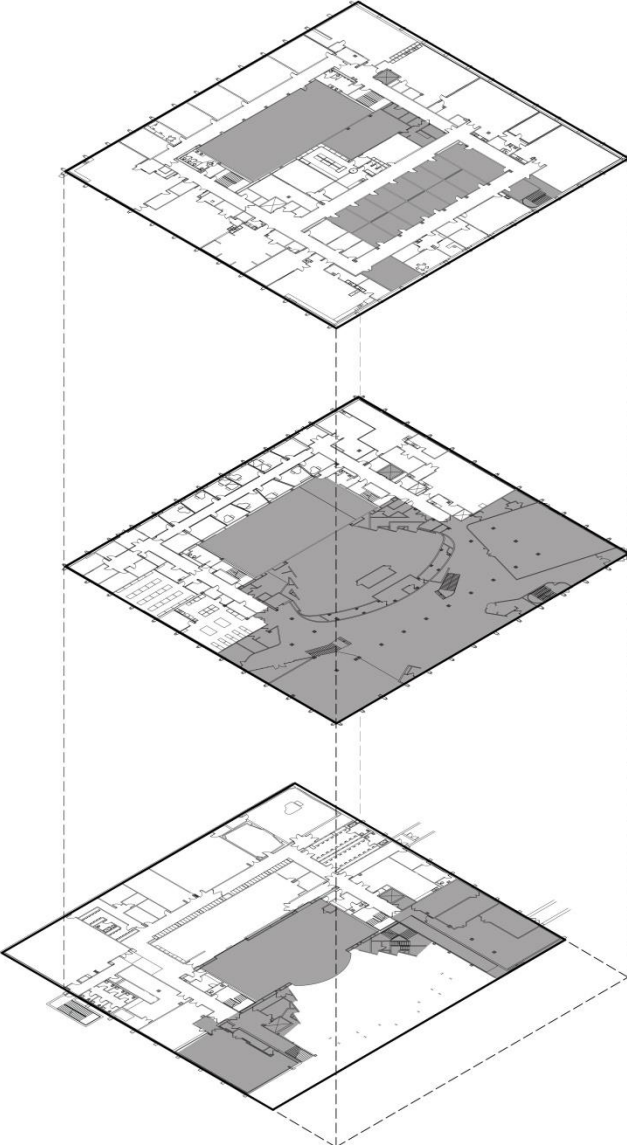
1. Waterman Theatre/Overview
2. Tyler Hall Phase II
 - Back of House Spaces
 - Priority Projects
 - Specialty Spaces
 - Phasing
3. Hewitt Hall
 - Planning Overview
 - Information Gathering
 - Program Development
 - Program
Diagrams/Concepts
 - Precedent Tours
4. Next Steps



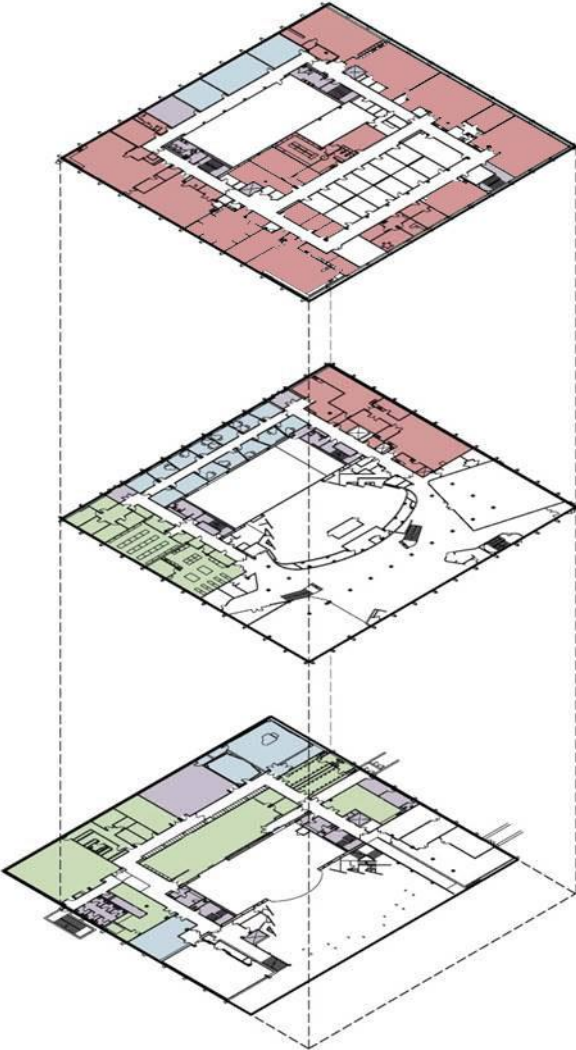
THEATRE OPENING

TYLER





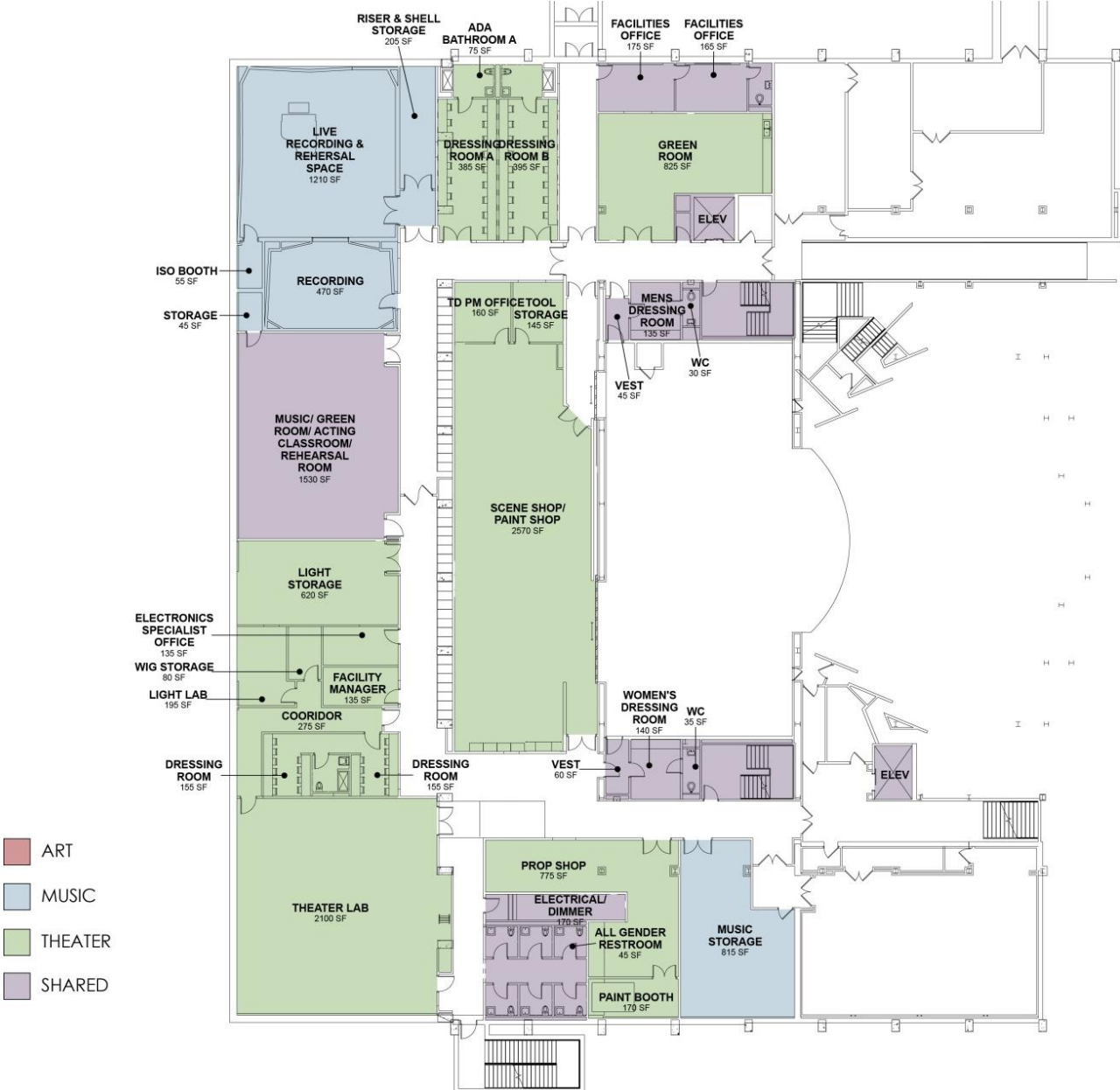
Phase I



Phase II

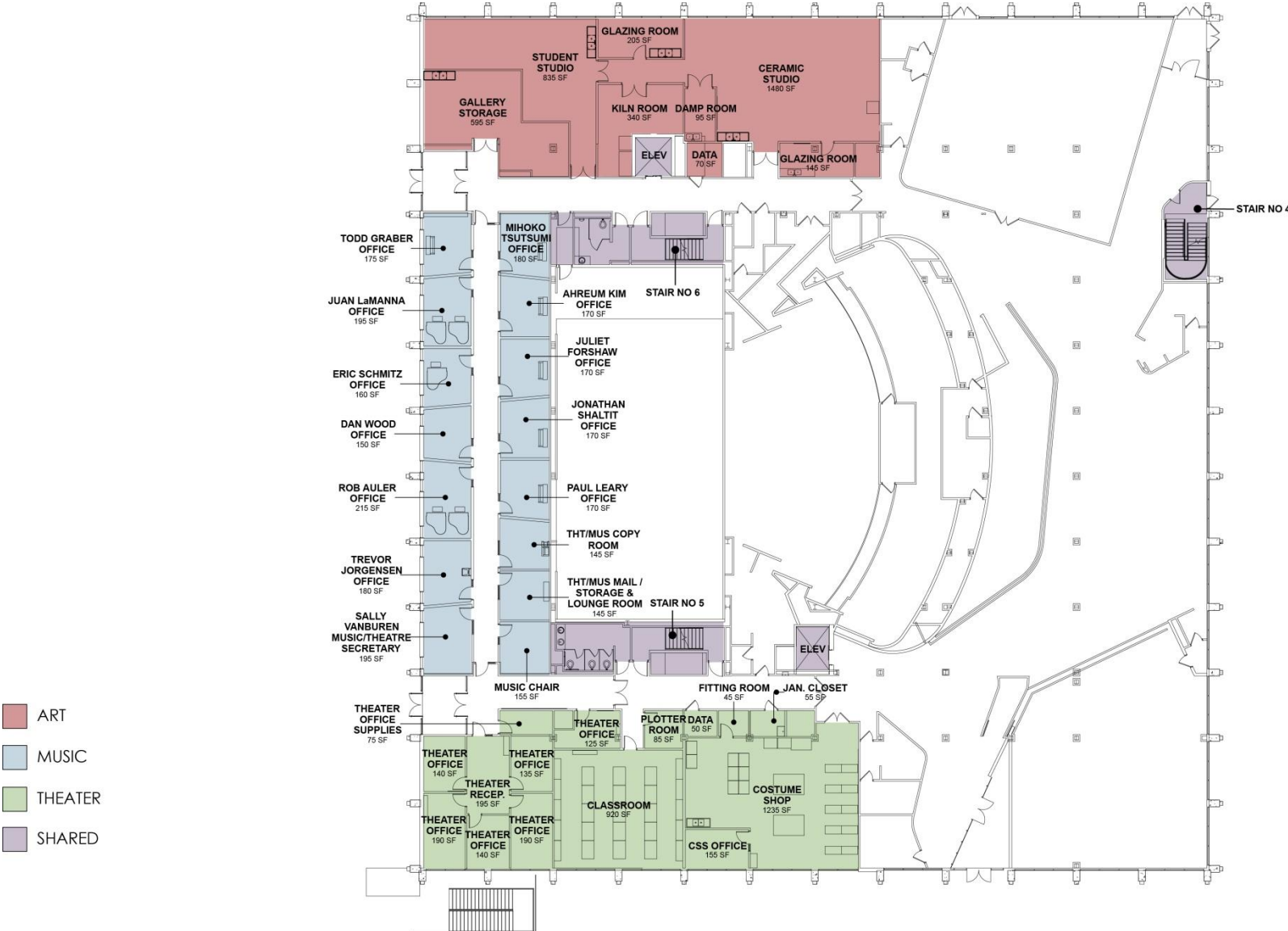
STAGE LEVEL PLAN

Tyler Hall Phase II



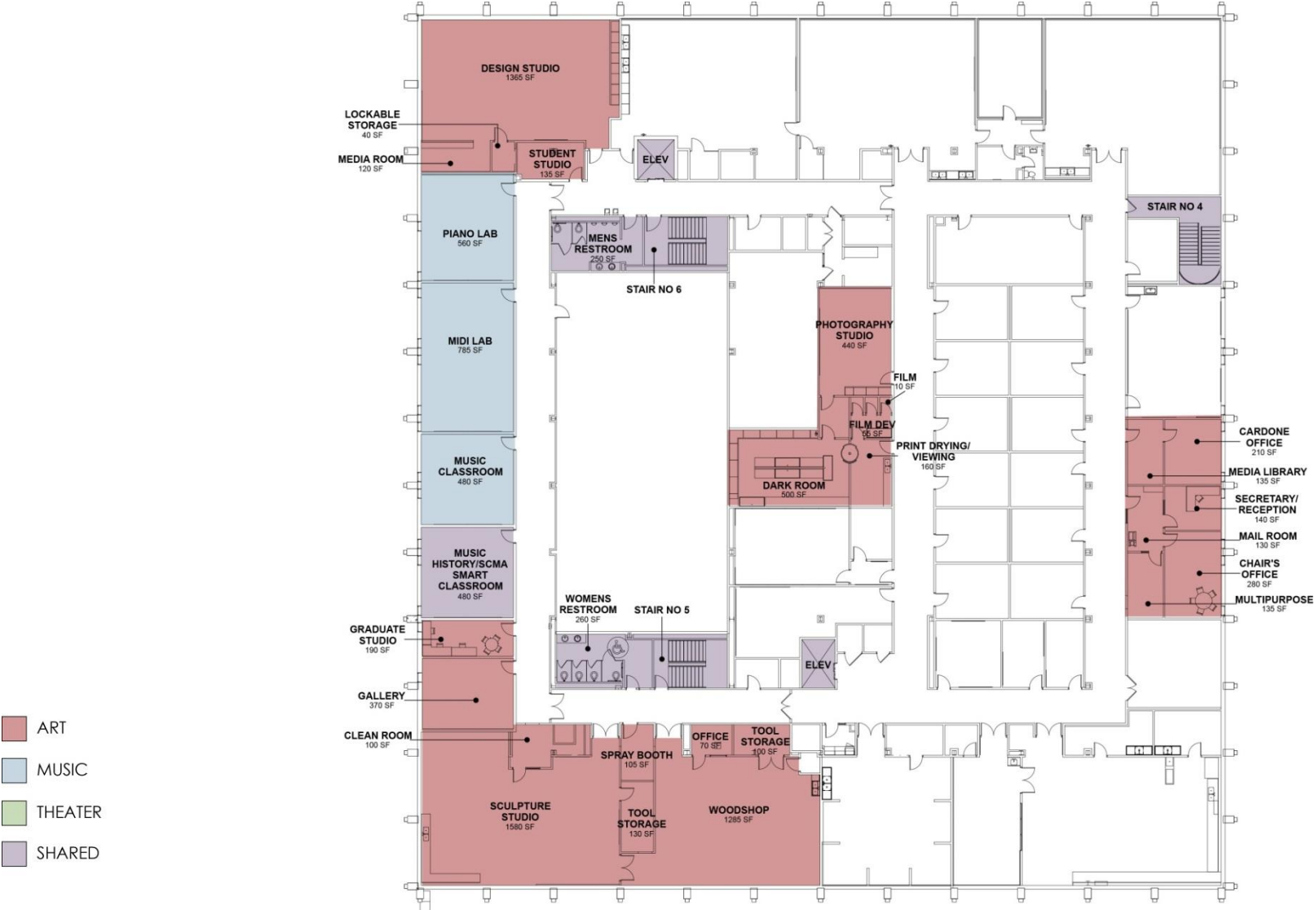
COMMONS LEVEL PLAN

Tyler Hall Phase II



SECOND LEVEL PLAN

Tyler Hall Phase II



PRIORITY PROJECTS

Status:

- 1A – Construction
- 1B – Complete
- 1C – Design Review
- 1D – Design Review

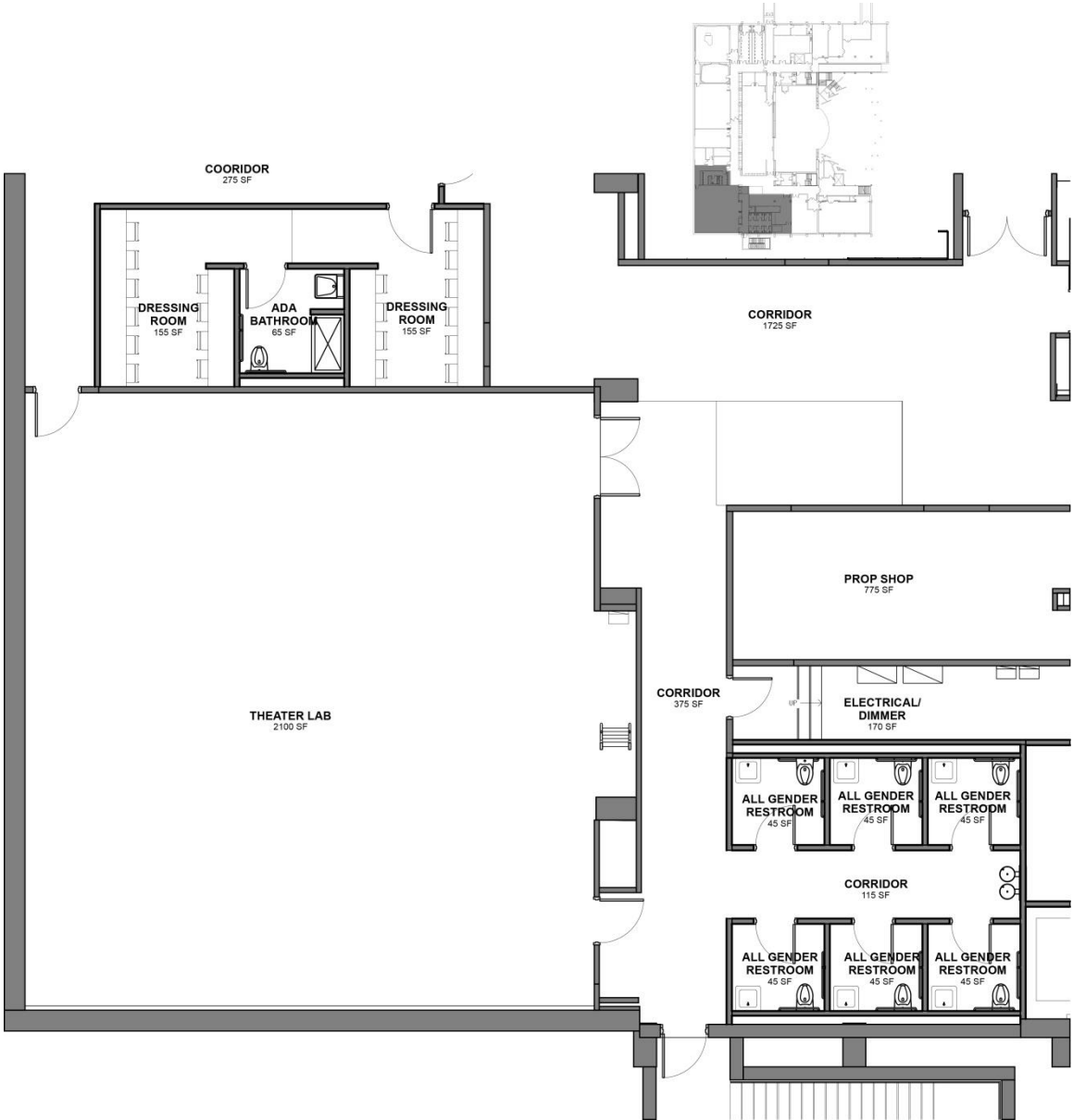


- PHASE 1A
- PHASE 1C
- PHASE 1D



STAGE LEVEL – THEATER LAB SUITE

TYLER



STAGE LEVEL – RECORDING SUITE

TYLER

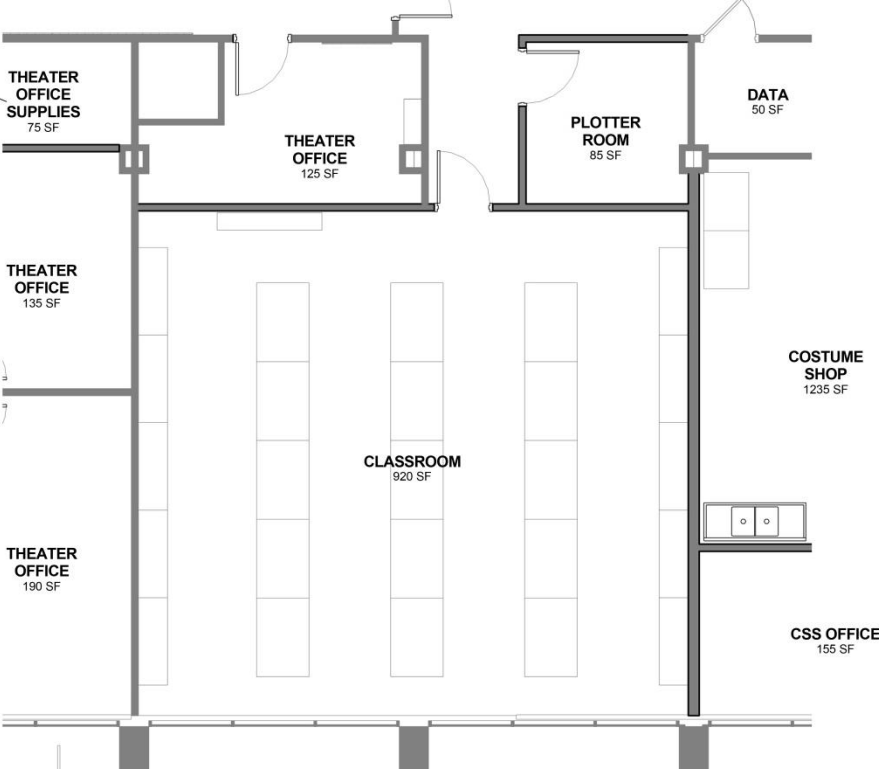
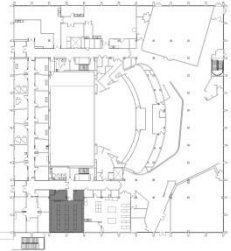
(Precedent Photos)



MUSIC/ART/THEATER CLASSROOMS

TYLER

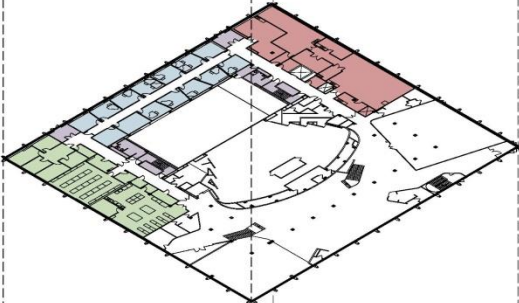
(Precedent Photos)



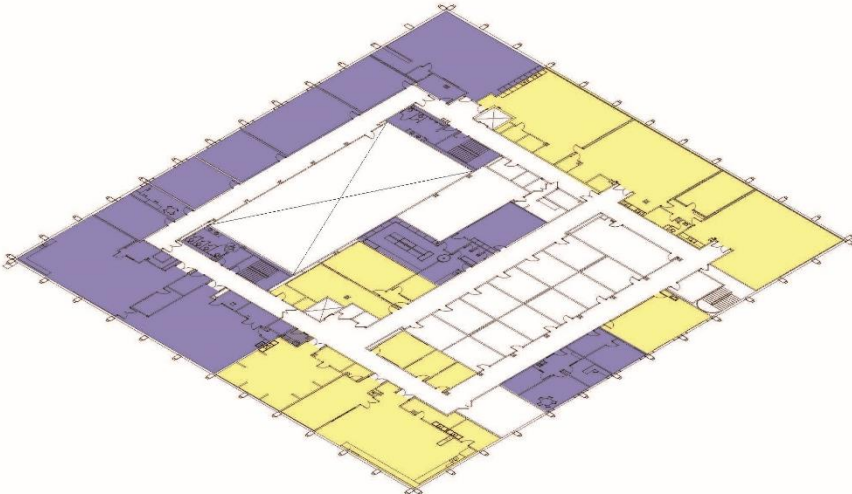
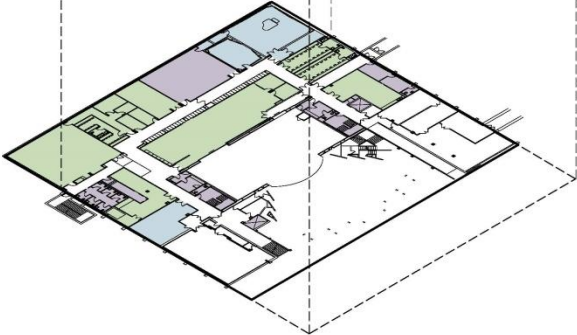
Second Level



Commons Level



Stage Level



Second Level with Priority Projects